



Prefabricated roof truss for clinic in Papua New Guinea Southern Highlands – Partner: Vision for Homes

Annual Report

2014 – 2015

Partner Housing Australasia (Building) Incorporated

Mission

Partner Housing Australasia (Building) Incorporated^{1 2} is a christian ministry working with families, volunteers and donors to provide building services, financial assistance and nurture for the provision of affordable housing to those in need throughout Australia and beyond.

Operations

Partner Housing is an entirely volunteer organisation, providing pro-bono professional engineering, architectural and building services and funding to other organisations involved in village infrastructure, housing, water supply, sanitation and associated training in developing countries.

Partner Housing offers three basic services:

1. Pro-bono “Design and Help-Desk” Engineering Services to other NGOs³ and governments of smaller developing Asia-Pacific countries.
2. Finance, design, materials supply, supervision, mentoring and training for village infrastructure, clinics schools, water, sanitation and housing projects.
3. Development and training in building systems with enhanced cyclone, earthquake and tsunami resistance.

The first overseas assignment, in 2005⁴, was the technical auditing of tsunami reconstruction in Thailand, Indonesia, India and Sri Lanka. Since then, Partner Housing has provided extensive pro-bono professional assistance for building, water and sanitation projects in Solomon Islands, Philippines, Kiribati and Tuvalu (for the government agencies), and smaller projects in other Asian countries, including Cook Islands, Papua New Guinea, Timor Leste, Pakistan and India.

Partner Housing provides “finance, design, materials supply, supervision, mentoring and training” programs to partner organisations for village projects in several Asia-Pacific countries. The most recent activity is water reticulation and latrine construction in Solomon Islands, construction of modular cyclone-resistant “Basic Shelters” in the Philippines, and village school, clinic and house construction in Papua New Guinea. Previous projects include a school and women’s refuge in Bangladesh, and cyclone anchors in Cook Islands.

Organisation

Name: Partner Housing Australasia (Building) Incorporated
ABN: 88 722 057 429 **Charitable File No:** 15429
Address: 272 Blackwall Road, Woy Woy NSW 2256, AUSTRALIA
Postal Address: PO Box 702, Pennant Hills NSW 1715, AUSTRALIA
Phone: +61 4 0721 8926
Email: PartnerHousing@electronicblueprint.com.au
Web: www.PartnerHousing.org
Public Officer / President: Rod Johnston **Secretary:** Arthur Gray

¹ Partner Housing Australasia (Building) Incorporated (ABN:88 722 057 429; CFN:15429), also referred to herein as “Partner Housing”, previously traded until 2005 as Habitat for Humanity Western Sydney Incorporated.

² Since 2005, Partner Housing Australasia (Building) Incorporated cooperated closely with our sister organisation, Partner Housing Charity, for the construction interest-free houses in the Macarthur Region. In 2015, the two organisations merged, with Partner Housing Charity donating its assets to Partner Housing Australasia (Building) Incorporated, which in turn, assumed responsibility for all liabilities of Partner Housing Charity.

³ NGO means Non-governmental Organization

⁴ Since incorporation in September 1989, Partner Housing Australasia (Building) Incorporated constructed and provided “interest-free” finance for 16 homes for low income families in western Sydney. While continuing to provide practical local assistance, the organisation now focuses on assisting communities in overseas developing countries.

Board of Directors



Rod Johnston President / Director B Tech, MEngSc, MICD, CPEng, MIEAust, NPER
Rod Johnston is a civil/structural engineer and builder with over 47 years experience in the design, construction, research and development of buildings in Australia and overseas. He has Masters Degrees in International and Community Development and Structural Engineering.



Bill Ryan Vice President / Director BE, MEngSc, CPEng, MIEAust, NPER, RPEQ
Bill Ryan has over 47 years engineering experience with 18 years experience running his own practice. He retired in 2010. Bill has specialized in formwork design and inspection, lightweight structures, scaffolding, domestic structural design and building inspections.



Arthur Gray Secretary / Director ME, MAIP, MACS, MIEAust, MIEEEE, JP
Arthur Gray spent his working career at the ABC (Australian Broadcasting Commission) as a TV technician and Development Engineer. He is experienced in leading not-for-profit organisations.



Susan Faber Treasurer / Director
Susan Faber is an experienced administrator with many years experience in education and the building industry, including a number of years in South-East Asia.



Bruce Hutchison Director BE, CPEng, MIEAust, NPER
Bruce Hutchison has over 43 years in the building industry, and is principal of a structural engineering practice involved in the full range of domestic, industrial and multi-storey commercial buildings, including analysis of tenders, costing and construction management.



Julienne McKay Director B Econ, MIPH
Julienne McKay is a senior economist with a masters degree in public health. She is very experienced economic and social research, including assignments in Nicaragua; Costa Rica, Indonesia; Timor Leste, Myanmar, Cambodia, Philippines, Pacific Islands, Papua New Guinea, Fiji and Laos.



David Kaunitz Director B Arch, ARB(UK)
David Kaunitz is a practising architect with very wide experience in development and disaster mitigation in Solomon Islands, Papua New Guinea, Cook Islands, Vanuatu and Fiji. Nominated for the 2013 LEAF (Leading European Architects Forum) Award for best sustainable development. Winner of the World Architecture Community Award.



Robyn Johnston Director
Robyn Johnston is an experienced building construction administrator and purchasing officer, with over 20 years experience in the administration of firms involved in building design and construction, and many years experience in the provision of affordable housing.



Peter Cheers Director
Peter Cheers is a licensed builder, carpenter and experienced construction manager. He is currently a director with the Australian Building Codes Board, responsible for the development and management of the national Plumbing Code of Australia. He is an experienced trainer, and has worked as a senior trade teacher in the Solomon Islands.



John Fielder Director
John Fielder has been a director of various Partner Housing organisations for over twenty years since 1993, and was a founding member of Partner Housing Charity. John has wealth of experience in fundraising, nurture not-for-profit building and Australian affordable housing.



Peter Sheldon Director
Peter has been a director of Partner Housing organisations since 2003. He is past president of the Australian Metals Recycling Industries Association (AMRIA) and is currently a partner in an international scrap metal trading firm. Peter brings a strong business ethic to Partner Housing.

President's Report

May I take this opportunity to thank our many supporters and volunteers, who work tirelessly towards the common goal of providing safe housing, clinics and schools, clean water supplies, healthy village sanitation and associated building works across the Asia-Pacific region.

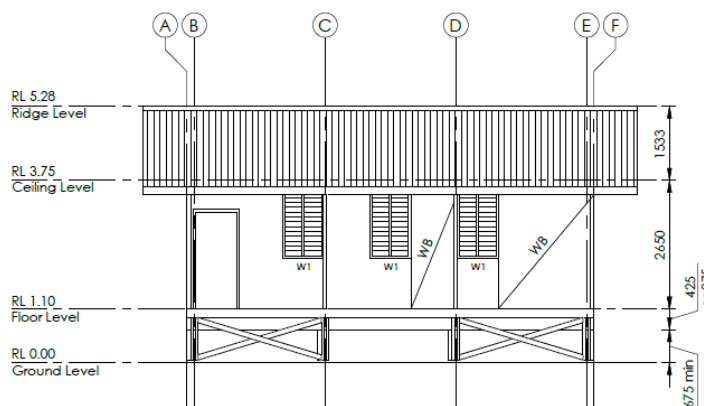
Partner Housing provides pro-bono (no-cost) professional services to other building NGOs and government clients. Much of Partner Housing's recent work has been in support of building or remediation programs in the Papua New Guinea, Solomon Islands and Philippines. Partner Housing now has well-established village-based "finance, design, materials supply, supervision, mentoring and training" packages.

All who have been associated with these projects can be confident of the substantial community benefit derived from the combination of building professionalism, targeted funding and relationship-building.

Below is an extract from a February 2015 report by the Partner Housing PNG Area Manager on progress on the remote-area clinic in the Papua New Guinea Southern Highlands, to be constructed under a tripartite arrangement between International Committee of Red Cross, Vision for Homes and Partner Housing.

"..... Visited clinic site with ICRC [International Committee of Red Cross]. Substantial clearing (by hand) already undertaken by villagers following marking out of the clinic by Kelly (Vision for Homes) a month earlier. Whilst on site, Kelly explained to villagers the need for a solid base for the clinic foundations and marked out an additional area to be cleared above the existing cleared ground. Site to contain clinic (to be built by Vision for Homes) plus three staff houses and 'resting house' for expectant/delivered mothers (to be built by villagers under guidance of ICRC). Travel time is approximately 6 hours from Mt Hagen. Road from Lalabo (District centre) is unsealed and from Kagua to Kalolo rough but solid, and reported to provide all weather access. Southern Highlands Provincial hospital in Mendi (Provincial capital) will provide trucks to transport materials from Mt Hagen to Kalolo 2-3 times per week"

Just eighty years ago (a mere three generations), the New Guinea highlanders were completely unaware of the existence of people outside their own locality. Today, cooperation between Vision for Homes and Partner Housing is assisting the New Guinea highlanders, not only with the provision of housing, schools and clinics, but also in providing building skills training that will help them to improve their own infrastructure.



A decade ago and 4,000 km to the south, events were unfolding that would lead directly down the "rough road" to this Papua New Guinea clinic construction program. To follow this ten year narrative, download "Bolted Braced and Built - The history of Partner Housing Australasia – 2005 to 2015."

<http://partnerhousing.org/wp-content/uploads/2015/02/P15030201-1-Partner-Housing-Bolted-Braced-and-Built-Short-Version.pdf>

As we approach our second decade, Partner Housing is embarking on an ambitious program to promote safe housing and village infrastructure throughout the southern Asia-Pacific region. Partner Housing will–

- Enhance our current Building Skills Training Packages, making these generally available to a wider range of training institutions;
- Develop refined building regulations, standards and details (including rationalized cyclonic wind, earthquake and tsunami loads); and make these available to the governments of South Pacific;
- Encourage and assist Vision for Homes (PNG) to expand their current building services to include supply of prefabricated building frames and enhanced building industry training;
- Assist the Ranongga (Solomon Islands) community associations, and expand their training and current sanitation, water supply construction and maintenance projects.

It is difficult to fully appreciate the influence of the Partner Housing's program. We are a small NGO consisting of a few dedicated and highly-professional volunteers, clearly focussed on improving the living standards of our neighbours through programs of enhanced building design and construction practices.

Perhaps Partner Housing's effectiveness is best summed up in the PNG Area Manager's report on the ICRC clinics project, quoted earlier in this report. The report continues –

".... If prefabrication is to be undertaken in Mt Hagen, then Kelly [Vision for Homes Manager] will require a technically skilled member of PHAB [Partner Housing] to assist ... Without on-the-ground support from PHAB [Partner Housing], Kelly [is] not confident to initiate prefabrication on such a strategically important project."

Or responsibility is clear May I conclude by paying tribute the hard work and dedication of many people who contribute tirelessly to the work of Partner Housing, providing pro-bono professional design and construction services and supporting the efficient operation of the organization.



Rod Johnston

President

Building and Infrastructure Projects



Latrine Construction
Solomon Islands



Basic Shelter
Philippines



Water Reticulation
Solomon Islands



Water Storage
Solomon Islands

Pro-bono Professional Services

Current Projects (Partner, Location, Year, Project and Activity)
WVI (Nepal) – 2015 Initial designs for World Vision International.
WVI (Vanuatu) – 2015 Design assistance for Vanuatu Cyclone Pam reconstruction.
ABCB-SA-CTS-PHA Consortium (Vanuatu) – 2015 South Pacific Building Codes & Handbooks.
TPUni (South Pacific) – Assisting in surveying Building Codes.
ICRC & VFH (PNG) – Standard design of clinic buildings (design complete).
VFH (PNG) – 2015 Water & Sanitation.
NRCA (Solomons) – 2013-2014 Design improved Keigold water supply & monitor maintenance program.
NRCA (Solomons) – 2015 Design of Obobulu water supply
DBTI (Solomons) 2012 to current – Building Skills Training Program. Continue as part of long-term training
VFH (PNG) – 2012 to current - Building Skills Training Program. Continue as part of long-term training
ARDA (Laos) - 2012 to current - Building Skills Training Program. Continue as part of long-term training

Completed Projects (Partner, Location, Year, Project and Activity)
SRG (Asia-Pacific) – 2013-2014 Coordinate Shelter Reference Group Design Standardization
Tuvalu PWD (Tuvalu) – Provision of electronic copy of Building Regulations
WVI (Philippines) – 2014 Design assistance for Cyclone Yolanda reconstruction
SGIA (Philippines) – 2014 Gibitngil Philippines Basic Shelter (Design phase)
NRCA (Solomon Islands) – 2014 Keigold Water Reticulation (Design phase)
Tonga MOI (Tonga) – 2014 Preliminary design advice for Cyclone Ian reconstruction
PHAB (South Pacific) – 2013 Standard Design Policy and Details
SRG (Australia) – 2013 Presentation to Shelter Reference Group Forum & design standardization
SRCA (Solomon Islands) – 2013 Obobulu Clinic Proposal – Proposal prepared for Ministry of Health
VFH (PNG) – 2013 Advice on concrete block manufacturing business plan and plant design
CF (Myanmar) – 2013 Design advice on preschool building
NRCA (Solomon Islands) – 2012 Buri Water Reticulation (Design phase)
DBTI (Solomon Islands) – Structural check of water tower (with TTW Consulting)
NRCA (Solomon Islands) – 2012 Buri Community Centre redesign
SRG (Australia) – 2012 to current – Participate in various activities of the Shelter Reference Group
EAA (Solomon Islands) – 2012 - Ranongga Sanitation Requested design changes
PHC (Australia) - 2010-2012 - Frame check and certification of houses for Tahmoor
EAA (Solomon Islands) – 2009 - Standard Buildings in Solomon Islands - On-going design of classrooms
EAA (PNG) – 2012 East Arwin Spring box design and supervision
EAA (Cook Islands) – 2010 Design and document cyclone-damaged house reconstruction.
EAA (Solomon Islands) – 2009 Hydro Electricity. Assessment of rural hydro electricity
DST (India) – 2009 Structural design of Baby Clinic Lingarajapuram (Bangalore, India)
EAA (Solomon Islands) – 2008 Design & help desk for Solomon Islands school reconstruction Gizo
PHC (Australia) – 2008 Frame check and certification of transportable affordable house in Airds (Sydney)
Kiribati PWD (Kiribati) – 2008 Design of replacement Butoa Bridge (North Tarawa) Design by Arup.

Kiribati PWD (Kiribati) – 2008 Design check of sewage disposal for Tab North Hospital.
PHAB (South Pacific) – 2008 Development of water harvesting and septic disposal guidelines
HFHI-AP (Timor Leste) – 2007 Architectural & engineering drawings for Resource Centre (Dili)
HFHI-AP (Mongolia) – 2007 Standard affordable houses. Preparations of architectural drawings.
HFHA (Solomon Islands) – 2007 Proposals for SI Government for post- tsunami repairs
KPWD (Kiribati) – 2007 Drawings and specifications for two copra sheds for outlying islands
HFHI-AP (Timor Leste) – 2006 Technical support for new concrete block system for housing.
HFHI-AP (Timor Leste) – 2006 Support for Habitat Resource Centre in Dili with Training Material.
EAA (Pakistan) – 2006 Engineering advice for girls school.
HFHI-AP (India) – 2005 - Technical & Management Audit of post-tsunami house reconstruction
HFHI-AP (Indonesia) – 2005 - Technical & Management Audit of post-tsunami house reconstruction
HFHI-AP (Thailand) – 2005 - Technical & Management Audit of post-tsunami house reconstruction
HFHI-AP (Sri Lanka) – 2005 - Technical & Management Audit of post-tsunami house reconstruction
Australian and International Partner Organisations
ABCB = Australian Building Codes Board (Vanuatu & South Pacific)
SA = Standards Australia (Vanuatu & South Pacific)
CTS = Cyclone Testing Station - James Cook University (Vanuatu & South Pacific)
TPUni = Tokyo Polytechnic University (Asia-Pacific)
SRG = Shelter Reference Group (Asia-Pacific)
WVI = World Vision International (Philippines & Vanuatu)
SGIA = Save Gibitngil Island Association (Philippines)
VFH = Vision for Homes (Papua New Guinea)
NRCA = North Ranongga Community Association (Solomon Islands)
SRCA = South Ranongga Community Association (Solomon Islands)
LS = Livingstone School (Bangladesh)
ICRC = International Committee of the Red Cross (Papua New Guinea)
CIRC = Cook Islands Red Cross (Cook Islands)
ARC = Australian Red Cross (Cook Islands)
DST = Divya Shanthi Trust (India)
Kiribati MPWU = Republic of Kiribati Ministry of Public Works and Utilities (Kiribati)
Tuvalu PWD = Tuvalu Public Works Department (Tuvalu)
Tonga MOI = Kingdom of Tonga Ministry of Infrastructure (Tonga)
DBTI = Don Bosco Technical Institute (Solomon Islands)
CF = Child Fund (Myanmar)
ARDA = Anglican Relief & Development Agency (Laos)
EAA = Emergency Architects Australia (PNG & Solomon Islands)
HFH-AP = Habitat for Humanity International (Thailand, Indonesia, India, Sri Lanka)
HFHA = Habitat for Humanity Australia (Solomon Islands & Australia)
PHC = Partner Housing Charity (Australia)
PHAB = Partner Housing Australasia (Building) Incorporated (Design & training information for Asia-Pacific)

Financial Report

Reference to full Financial Report for the Year Ended 30 June 2014

The Balance Sheet and Income Statements reproduced herein are extracted from the full version of "Financial Report for the Year Ended 30 June 2015", presented separately to the Annual General Meeting for adoption and auditing. Reference should be made to the audited accounts for the complete notes and explanations.

Merger with Partner Housing Charity

Partner Housing Charity, an organisation of similar origin to Partner Housing Australasia (Building) Incorporated, has chosen to wind-up after many years of constructing affordable housing in the Macarthur Region. As part of this process, Partner Housing Charity has donated its assets and liabilities to Partner Housing Australasia (Building) Incorporated.

The extent of these donations is as follows.

Donation by cash transfer	\$	5,898.66
Donation of two improved properties at Tahmoor	\$	507,741.12
Donation of three mortgages valued at	\$	330,785.25
Less		
Write-off of loan to Partner Housing Charity	-\$	50,000.00
Write-off of loan to Partner Housing Charity	-\$	20,000.00
Liability to Habitat for Humanity Australia	-\$	<u>79,363.18</u>
Net donation	\$	695,061.85

Partner Housing Australasia (Building) Incorporated has:

- written off the "Part B mortgages", which are unlikely to be realized,
- revaluation of the Tahmoor properties to reflect the agreed value of the sales that will take place as soon as formal registration of property title is completed., and
- inclusion of the GST liability that will accrue on the sale of those properties.

The Balance Sheet presented herein, and the detailed Accounts of the organisation, reflect these write-offs, revaluations and liabilities.

INCOME STATEMENT

FOR THE YEAR ENDED 30TH JUNE 2015

	\$ 2,015	\$ 2,014
Donations Received	\$ 52,051	\$ 12,360
Interest received	\$ 8,938	\$ 9,893
Membership Fees	\$ 110	\$ 440
ATO Tax refund	\$ 423	\$ 318
Sundry Income	\$ 197	\$ 80
Total Income	\$ 61,719	\$ 23,091
<u>Expenditure</u>		
Project costs, including donations to partner organisations	\$ (31,538)	\$ (85,396)
Banking Costs	\$ (146)	\$ (210)
ATO Tax payment	\$ -	\$ -
Other Costs	\$ -	\$ -
Miscellaneous		\$ (80)
Fundraising Costs	\$ (198)	\$ (168)
Operating Expenses	\$ (9,049)	\$ (492)
Total Expenditure	\$ (40,931)	\$ (86,346)
<u>Adjustments in Provisions</u>		
Adjustment to Tax Deductible Overseas Aid Account # 2	\$ (6,578)	\$ (12,327)
<u>Donation of Mortgages by Partner Housing Charity</u>		
Mortgages donated by Partner Housing Charity	\$ 330,785.25	
Less debt to HFHA on PHC Mortgages	\$ (79,363.18)	
Less write-off of the outstanding Part B Mortgages.	\$ (46,400.00)	
Net value of mortgages donated	\$ 205,022	
<u>Donation of Property by Partner Housing Charity</u>		
Improved value at cost of Tahmoor properties	\$ 531,241.12	
Profit on agreed sales of properties	\$ 68,758.88	
Total value of donated properties	\$ 600,000.00	
Less total deposits received (before donation)	\$ (23,500.00)	
Less provision for GST	\$ (40,000.00)	
Net value of properties donated	\$ 536,500	
Write off of loans to Partner Housing Charity	\$ (70,000)	\$ -
Total Adjustments	\$ 664,944	\$ (12,327)
NetProfit (Loss) from Ordinary Activities Before Income Tax Expense	\$ 685,733	\$ -
Income Tax Expense Relating to Ordinary Activities	\$ -	
Net Loss from Ordinary Activities After Income Tax Expense	\$ 685,733	\$ -
Retained Earnings - last year	\$ 854,732	
Retained Earnings - this year	\$ 1,540,465	\$ 854,732
The accompanying Notes		
This statement should be read in conjunction with the Audit Report.		

BALANCE SHEET**AS AT 30TH JUNE 2015**

	\$	2,015	\$	2,014
Current Assets				
Cheque Account	\$	14,336	\$	1,015
Cash Reserves Account #1 (Operating Account)	\$	444,087	\$	419,775
Cash Reserves Account #2 (Overseas Fund)	\$	30,930	\$	24,352
Cash Reserves Account #3 (Australia Fund)	\$	10	\$	10
Mortgage receivable - A & K Jensen	\$	11,440	\$	11,440
Mortgage receivable - D & F Galbraith	\$	11,700	\$	11,700
Mortgage receivable - N Sua	\$	13,520	\$	13,520
Mortgage receivable - L Grainge	\$	9,776	\$	-
Mortgage receivable - R Hyratt	\$	8,840	\$	-
Mortgage receivable - Y Olsen	\$	9,776	\$	-
Mortgage receivable - K Beaver & C Roberts	\$	-	\$	-
Mortgage receivable - S Harris & W Marcheff	\$	-	\$	-
Total Current Assets	\$	554,415	\$	481,813
Non-Current Assets				
Mortgage receivable - A & K Jensen	\$	91,540	\$	102,980
Mortgage receivable - D & F Galbraith	\$	102,336	\$	115,936
Mortgage receivable - N Sua	\$	150,115	\$	162,415
Mortgage receivable - L Grainge	\$	23,274		
Mortgage receivable - R Hyratt	\$	70,115		
Mortgage receivable - Y Olsen	\$	157,897		
Mortgage receivable - K Beaver & C Roberts	\$	255,800		
Mortgage receivable - S Harris & W Marcheff	\$	275,300		
Loan to Partner Housing Charity	\$	-	\$	50,000
Total Non-Current Assets	\$	1,126,377	\$	381,331
			\$	-
Total Assets	\$	1,680,792	\$	863,144
Current Liabilities				
			\$	-
Habitat for Humanity Australia Inc	\$	10,940	\$	3,017
Committed Future Overseas Expenditure	\$	30,930	\$	24,352
Total Current Liabilities	\$	41,869	\$	27,369
Non-Current Liabilities				
Habitat for Humanity Australia Inc	\$	98,457	\$	31,042
Total Non-Current Liabilities	\$	98,457	\$	31,042
			\$	-
Total Liabilities	\$	140,326	\$	58,412
Net Assets	\$	1,540,465	\$	804,732
Members' Equity				
Retained Earnings	\$	1,540,465	\$	804,732

The accompanying Notes
form part of these Accounts.

This statement should be read in conjunction with the Audit Report.